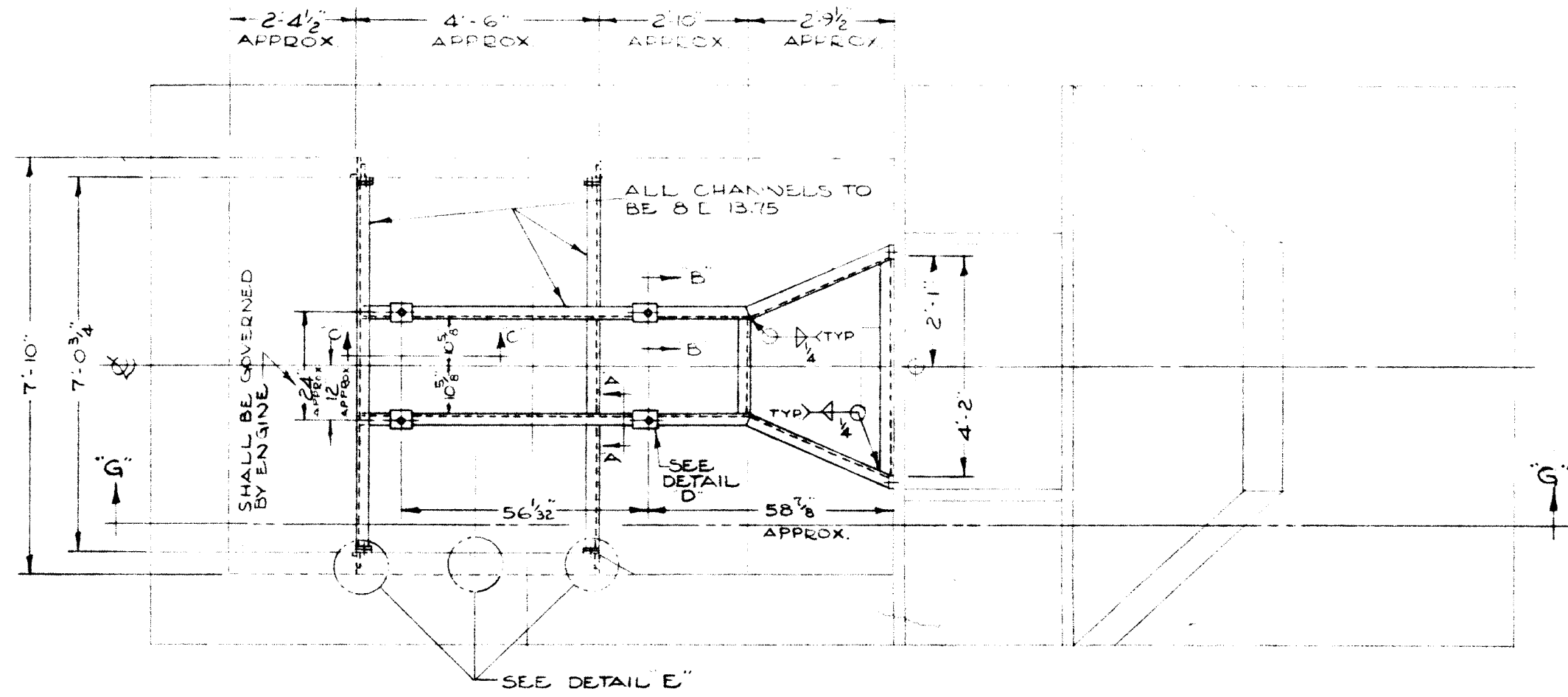
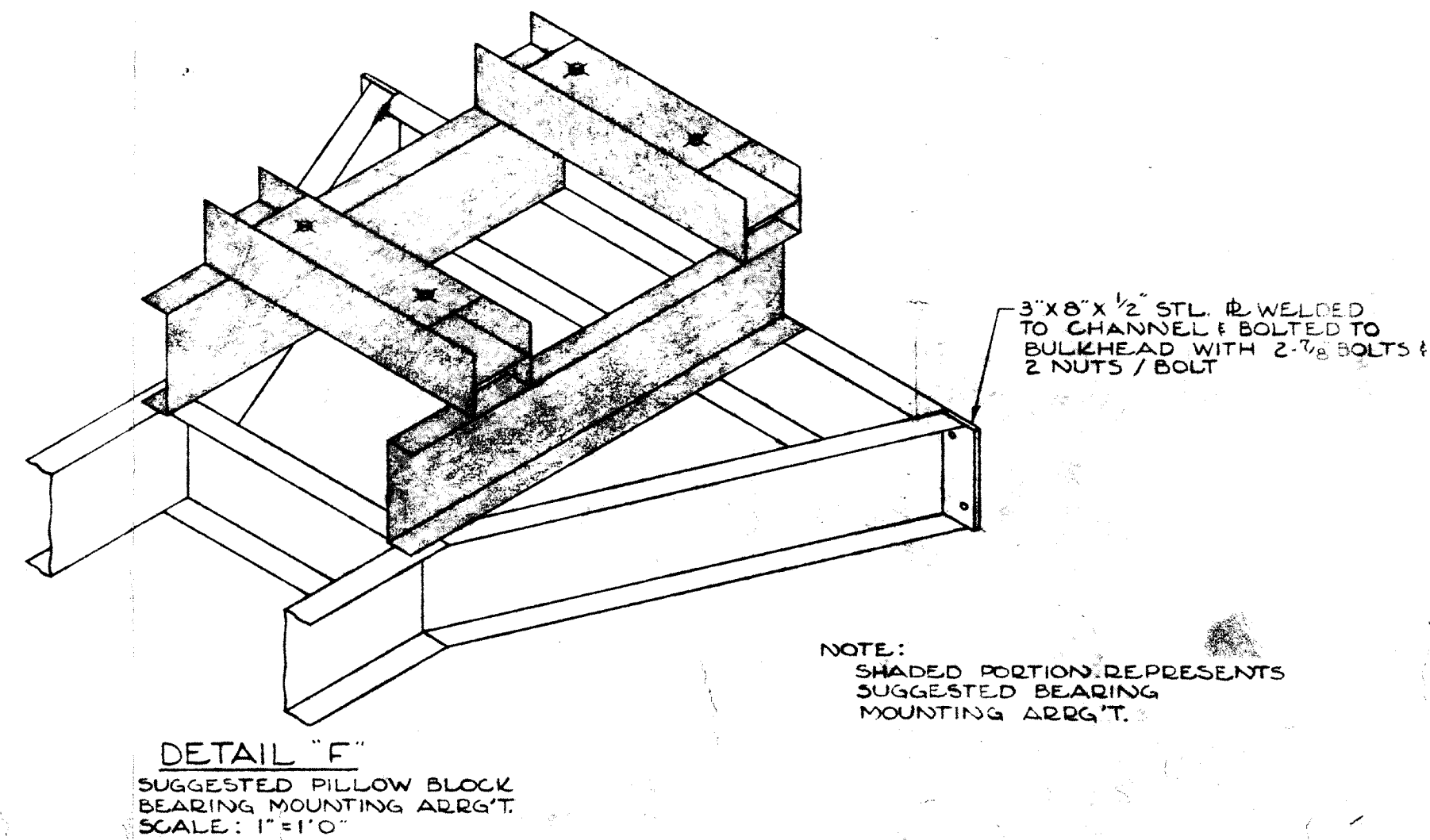
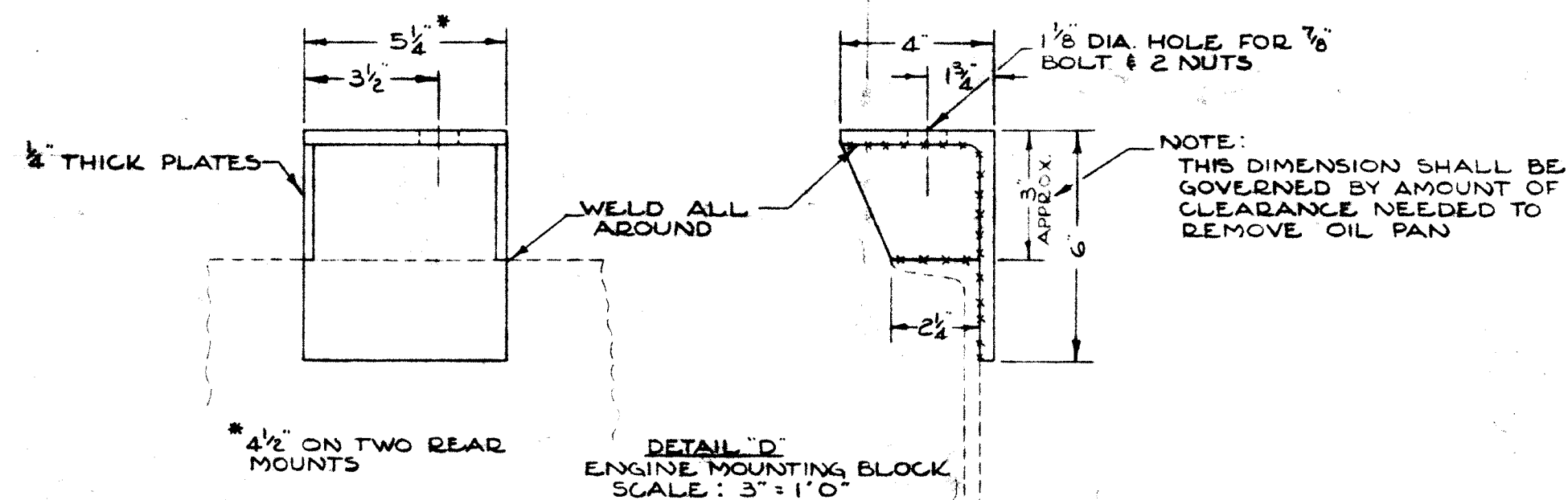
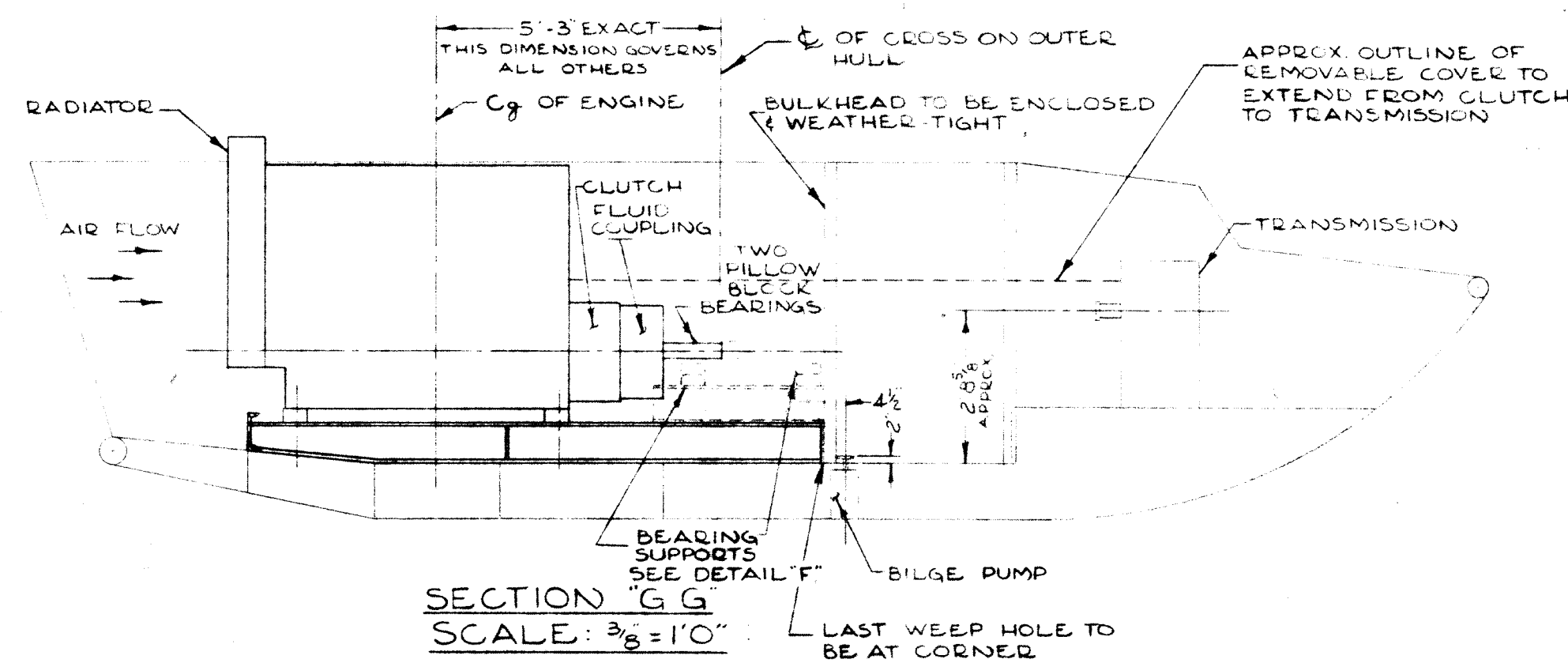
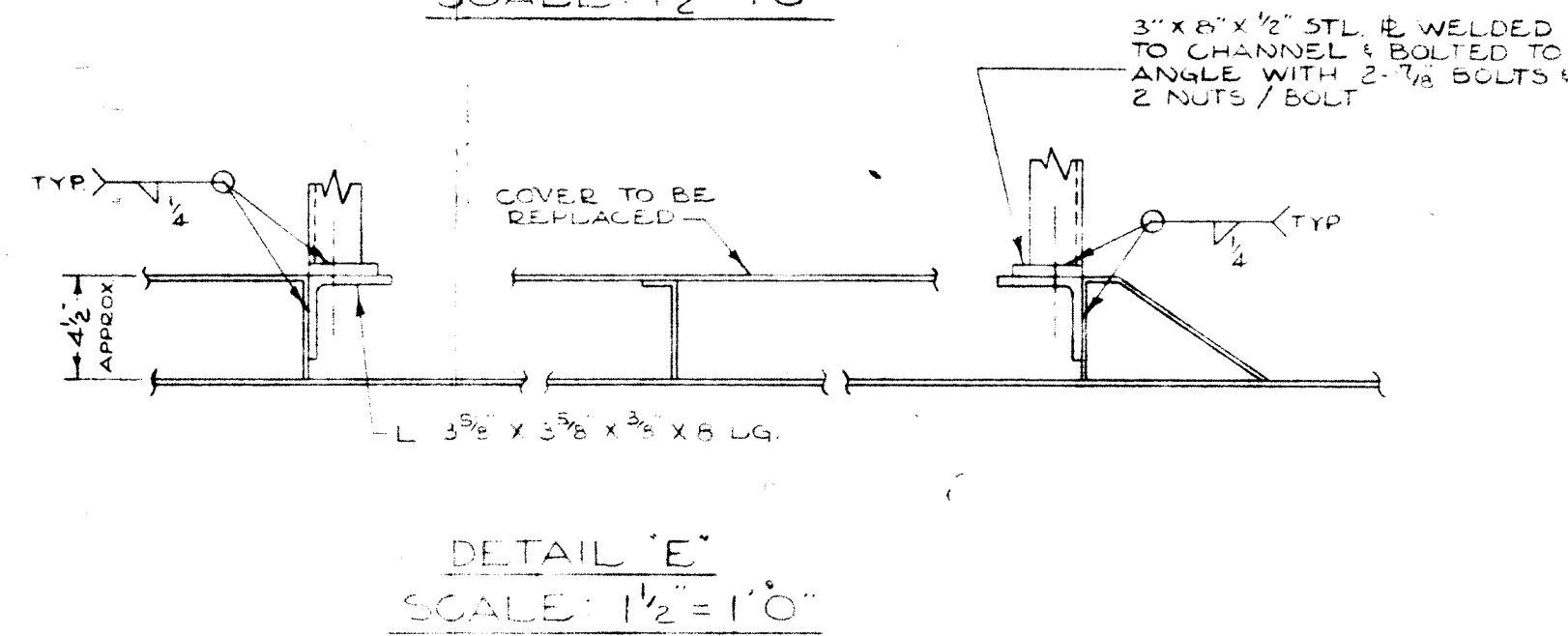
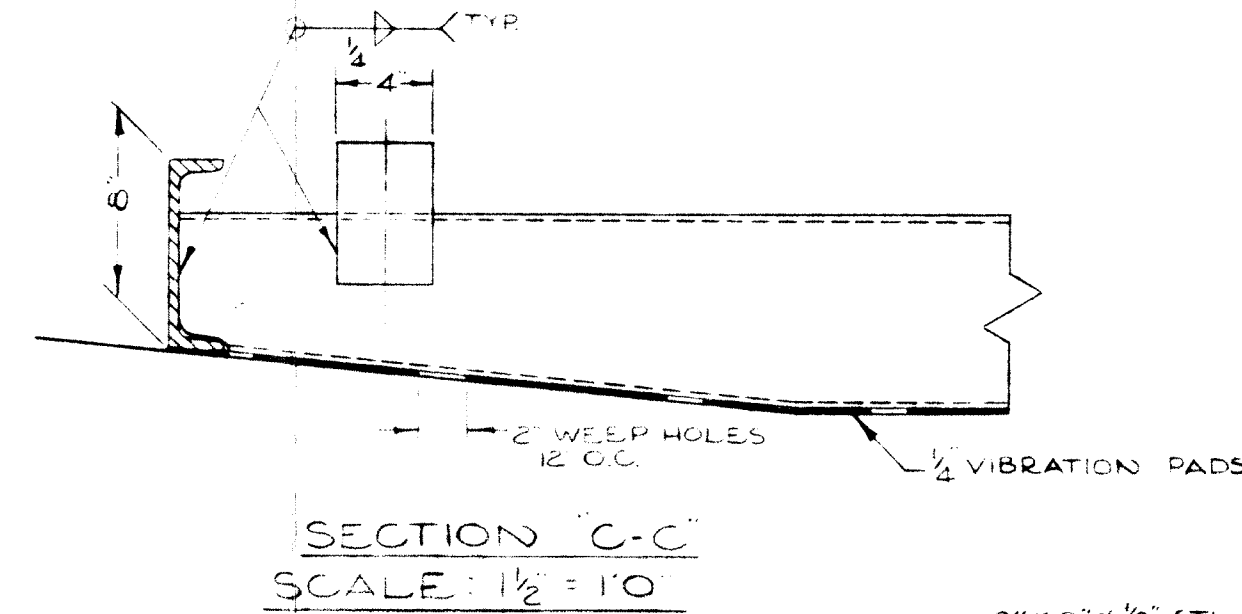
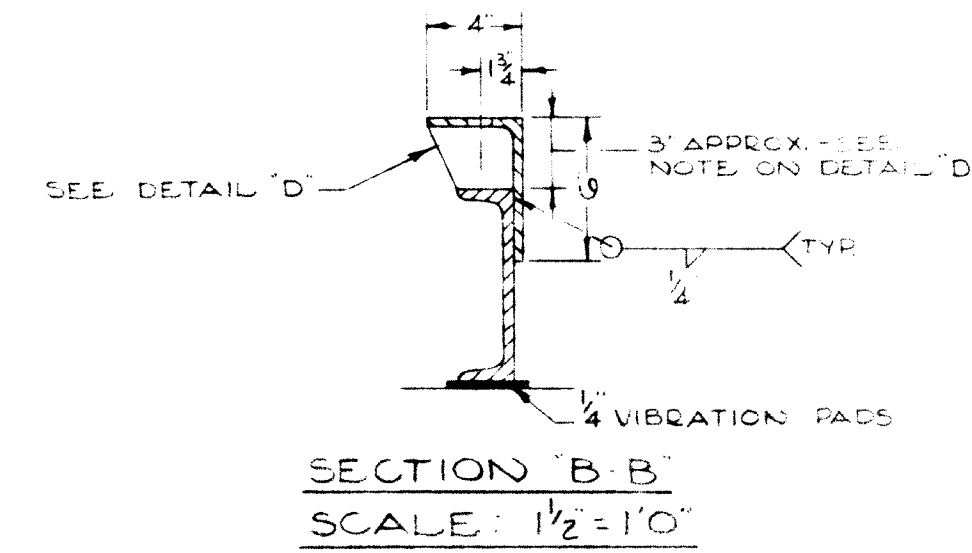
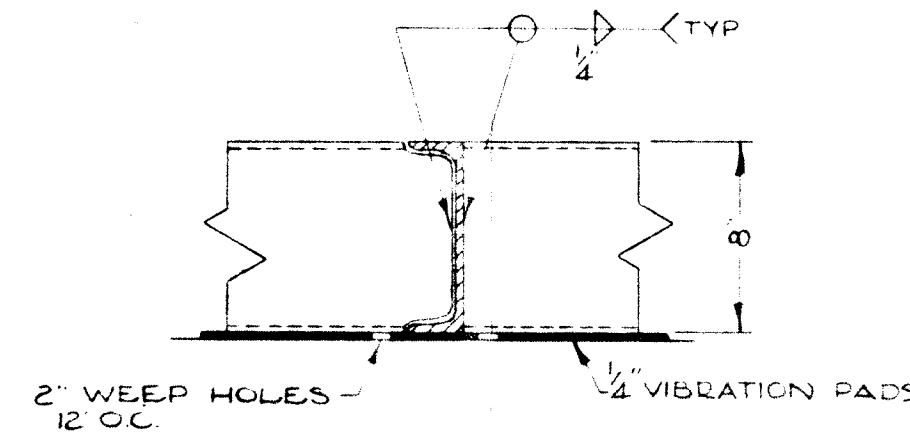


GENERAL NOTES

- ① ALL MATERIAL FOR ENGINE BASE SHALL BE STRUCTURAL CARBON STEEL CONFORMING TO A.S.T.M. A-7
- ② WELDING SHALL BE DONE BY OPERATORS WHO HAVE BEEN PREVIOUSLY QUALIFIED BY TESTS AS PRESCRIBED IN THE AMERICAN WELDING SOCIETY STANDARD QUALIFICATION PROCEDURE TO PERFORM THE TYPE OF WORK REQUIRED
- ③ CONTRACTOR SHALL SUBMIT FOR APPROVAL ALL LITERATURE, SKETCHES ETC. NECESSARY TO COMPLETELY DESCRIBE ALL SYSTEMS OR COMPONENTS BEFORE FABRICATION. APPROVAL OF SUCH LITERATURE & SKETCHES SHALL IMPLY APPROVAL OF INTENTION ONLY THE CONTRACTOR SHALL BE RESPONSIBLE FOR ENGINEERING ADEQUACY.
- ④ VIBRATION PADS SHALL BE 1/4" ELASTO-GRIP™ HIGH RESILIENCY PAD TYPE ISOLATION MATERIAL AS PRODUCED BY KORFUND DYNAMICS CORP. OR EQUAL. PADS SHALL BE GLUED WITH EPOXY GLUE TO BOTTOM FLANGE OF CHANNELS.
- ⑤ THE CONTRACTOR SHALL VERIFY ALL DIMENSIONS.



PLAN VIEW
SCALE: 3/8" = 1'-0"



APPROVED _____ DATE 1/27/65
COMMISSIONER OF PUBLIC WORKS

APPROVED _____ DATE 1/27/65
CITY ENGINEER

DEPARTMENT OF PUBLIC WORKS
DIVISION OF ENGINEERING
CITY OF BUFFALO

BASE DETAIL AND ENGINE LOCATION

CONVERSION OF L.V.T. TO DIESEL POWER

DRAWN BY: W.X.F. SCALE: AS SHOWN
CHECKED BY: _____ DATE: 1/27/65

DWG. NO. E-9 SHEET 1 OF 2